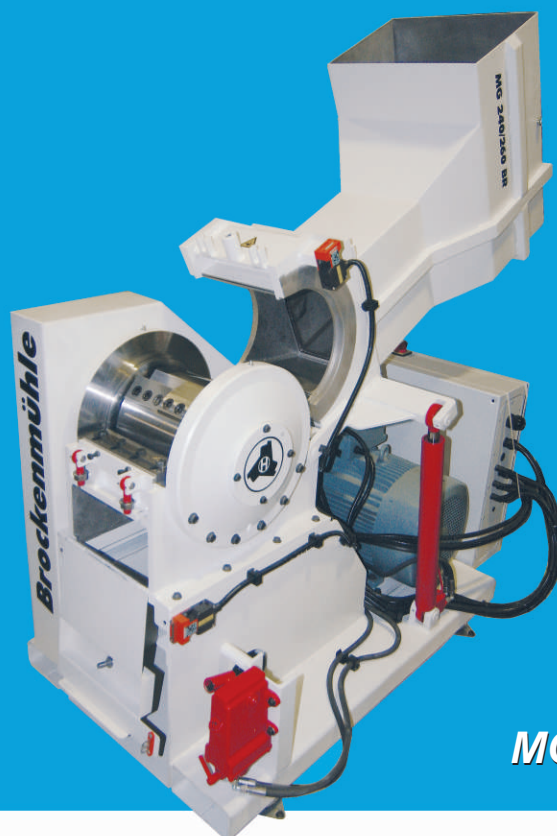


#### Some benefits:

- \_ special U-CUT rotor for soft peeling cut
- \_ no need to adjust the rotor knife
- \_ extremely quick sieve and knife change
- \_ very quick and easy to clean
- \_ ideal granulate quality, similar grain
- \_ high performance with low energy requirement
- \_ outer bearing assembly fitted, dust protection
- \_ CE certified

## series 260 BR Lump granulator

- \_ Working width  
240 mm
- \_ Rotor diameter  
260 mm
- \_ Motor output  
11 - 15 kW
- \_ Number of rotor knives  
4
- \_ Number of stator knives  
2
- \_ Rotor speed  
490 r.p.m.
- \_ Nominal weight  
1.200 kg
- \_ Grinding output  
appr. 40 - 110 kg/h



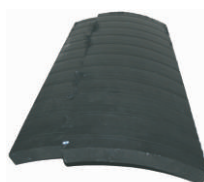
**MG 240/260 BR**

### Small lump granulator for hard applications

*Single stage shredding of small and solid start-up lumps*



The Hellweg 300 BR series granulators enable gentle and thorough granulation of heavy start-up lumps, sprue cakes, thick-walled sheets or pipes, on account of the extremely high stability of the entire machine housing and through the high moment of gyration of the massive special U-CUT rotor that is made from one solid piece of metal. The geometry used for the blades enables a cutting principle that is based on a so-called "peeling cut", combined with limitation of cutting depth. This prevents the rotor blade from penetrating too deeply into the plastic lumps being shredded. The material is "peeled off" from the lumps so that blockage of the rotor is prevented and fast and energy-saving shredding is guaranteed.

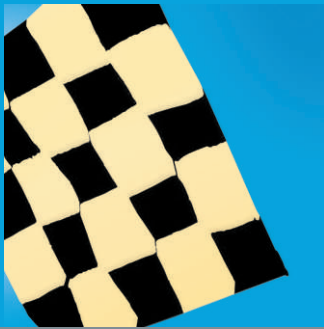


MG 240/260 BR detail special rotor

application examples

more >>

# Hellweg granulators hold ***Pole-Position***



*Hellweg Maschinenbau* constructs machinery and equipment in its own production facilities, including especially setting up of systems for specific customer tasks, for customers in the plastics and recycling industries throughout the world. The production range covers machine-side mills, granulating mills, edge strip granulators, edge strip feeding equipment, film shredders, as well as extraction and dust removal plant including accessories.



**Hellweg**

[www.cutting-mills.com](http://www.cutting-mills.com)



## ***series 260 BR***

**Small lump granulator for hard applications**

*Single stage shredding of small and solid start-up lumps*

*Hellweg* granulators are used by plastic processing companies to compound thermoplastic waste arising from production – especially engineering thermoplastics such as ABS, PA, PBT, PC, POM, but also PE and PP, involving dosing of ground material again with virgin material during running production, or addition of the material in another application at a later stage. The material to be handled falls into the cutting chamber of the *Hellweg* granulator via a guiding chute and is repeatedly shredded by cutting between rotating and fixed knives, until it passes an attached sieve as ground material. The sieve extends over the lower half of the grinding chamber and is exchangeable. This enables appropriate sieve perforation to be used for the particle size required.

The machines may be supplied optionally with soundproofed cabins and a noise absorbing feeding chute.

### **Characteristics:**

- \_ highly precise production, heavy welded housing
- \_ high performance direct drive through transmission belts
- \_ direct mounting of the knives on solid rotors produced
- \_ wear resistant versions for reinforced plastics
- \_ from one solid piece of metal, no imbalance and eliminating need for rotor knife adjustment
- \_ structural design for easy, complete cleaning through absence of dead corners
- \_ high throughput at low drive power
- \_ special sieves guarantee constant grain sizes



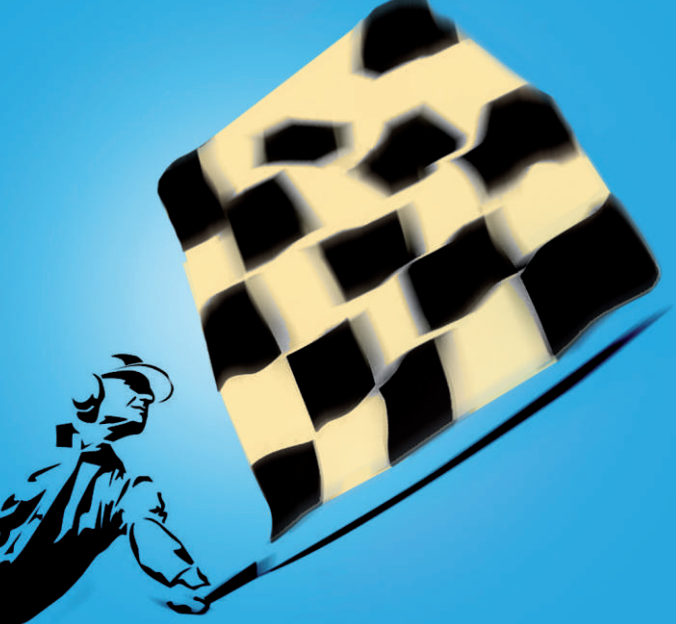
Model / Size	Working width	Rotor - Ø	Motor output	Number of rotor knives	Number of stator knives	Rotor speed	Nominal weight	Grinding output
MG 240/260 BR	240 mm	260 mm	11 - 15 kW	4	2	490 r.p.m.	appr. 1.200 kg	appr. 40-110 kg/h

Under reserve of technical changesments.

**Test it !**

After a brief agreement, simply send us a sample of the material to be granulated. We will then select a suitable granulator for your application and carry out trial granulation. We will then receive the result returned in the form of granulate for your examination, without any obligation on your part.

**Hellweg Maschinenbau** GmbH & Co.KG  
Vennstr. 10 · 52159 Roetgen / Germany  
Fon +49 2471 4254 · Fax +49 2471 1630  
[info@hellweg-maschinenbau.de](mailto:info@hellweg-maschinenbau.de)  
[www.hellweg-maschinenbau.de](http://www.hellweg-maschinenbau.de)



#### Some benefits:

- \_ extremely quick sieve and knife change
- \_ no need to adjust the rotor knife
- \_ performance-enhancing diagonal cut
- \_ very quick and easy to clean
- \_ ideal granulate quality, similar grain
- \_ high performance with low energy requirement
- \_ outer bearing assembly fitted, dust protection
- \_ CE certified

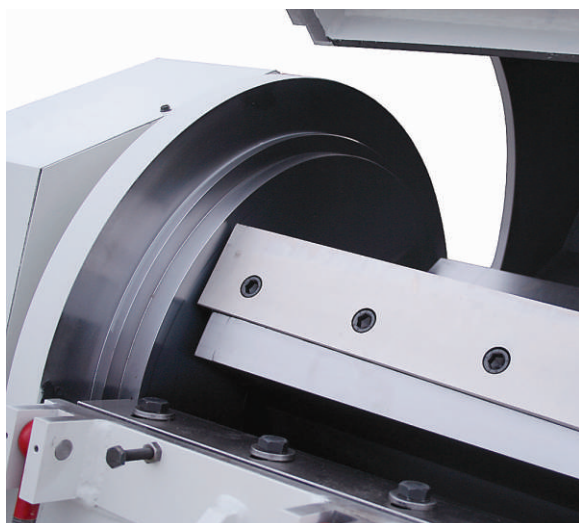
# series 450

- \_ Working width  
600-1.200 mm
- \_ Rotor diameter  
450 mm
- \_ Motor output  
22-75 kW
- \_ Number of rotor knives  
3-7
- \_ Number of stator knives  
2
- \_ Rotor speed  
490 r.p.m.
- \_ Nominal weight  
appr. 2.800 kg
- \_ Grinding output  
appr. 650-2300 kg/h



**M 600/450**

Heavy duty granulators for hollow bodies and voluminous parts  
*High performance for voluminous parts and high throughput*



M 600/450 detail rotor and bearing flange

The Hellweg 450 series granulators enable gentle and thorough granulation of voluminous and large surface area plastic parts such as bumpers from the automotive industry or parts dismantled from old cars like plastic tanks, door interior claddings, canisters etc on account of the real helical scissors-cut and the high moment of gyration of the massive rotor that is made from one solid piece of metal. In connection with a 7-knives rotor also higher material outputs can be reached as a central application. Sheets, pipes, profiles and thick-walled mouldings, etc can also be granulated in a save way.

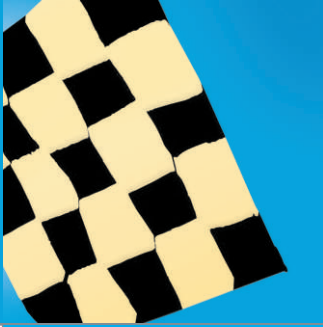


application examples

[more >>](#)



# Hellweg granulators hold ***Pole-Position***



*Hellweg Maschinenbau* constructs machinery and equipment in its own production facilities, including especially setting up of systems for specific customer tasks, for customers in the plastics and recycling industries throughout the world. The production range covers machine-side mills, granulating mills, edge strip granulators, edge strip feeding equipment, film shredders, as well as extraction and dust removal plant including accessories.



**Hellweg**

[www.cutting-mills.com](http://www.cutting-mills.com)



## series 450

**High performance granulators for voluminous parts and high throughput**  
*Processing of large surface area plastic parts, sheets, pipes and profiles*

*Hellweg* granulators are used by plastic processing companies to compound thermoplastic waste arising from production – especially engineering thermoplastics such as ABS, PA, PBT, PC, POM, but also PE and PP, involving dosing of ground material again with virgin material during running production, or addition of the material in another application at a later stage. The material to be handled falls into the cutting chamber of the *Hellweg* granulator via a guiding chute and is repeatedly shredded by cutting between rotating and fixed knives, until it passes an attached sieve as ground material. The sieve extends over the lower half of the grinding chamber and is exchangeable. This enables appropriate sieve perforation to be used for the particle size required.

The machines may be supplied optionally with soundproofed cabins and a noise absorbing feeding chute.

### Characteristics:

- \_ highly precise production, heavy welded housing
- \_ high throughput at low drive power
- \_ wear resistant versions for reinforced plastics
- \_ direct mounting of the knives on solid rotors produced from one solid piece of metal, no imbalance and eliminating need for rotor knife adjustment
- \_ structural design for easy, complete cleaning through absence of dead corners
- \_ high performance direct drive through transmission belts
- \_ special sieves guarantee constant grain sizes



Model / Size	Working width	Rotor - Ø	Motor output	Number of rotor knives	Number of stator knives	Rotor speed	Nominal weight	Grinding output
M 600/450	600	450	22 - 30 kW	3 - 7	2	490 r.p.m.	1.800 kg	appr. 650-1.300 kg/h
M 1200/450	1.200	450	30 - 75 kW	3 - 7	2	490 r.p.m.	3.400 kg	appr. 1.000-2.300 kg/h

Under reserve of technical changesments.

**Test it !**

After a brief agreement, simply send us a sample of the material to be granulated. We will then select a suitable granulator for your application and carry out trial granulation. We will then receive the result returned in the form of granulate for your examination, without any obligation on your part.

**Hellweg Maschinenbau** GmbH & Co.KG  
Vennstr. 10 · 52159 Roetgen / Germany  
Fon +49 2471 4254 · Fax +49 2471 1630  
[info@hellweg-maschinenbau.de](mailto:info@hellweg-maschinenbau.de)  
[www.hellweg-maschinenbau.de](http://www.hellweg-maschinenbau.de)